



Corso Novara, 60/c - 27029 VIGEVANO (PV) ITALY

Tel. 0381.23.853 - Fax 0381.311109

E-mail: info@romannello.it - www.romannello.it

Codice Fiscale e Partita IVA 01542240187

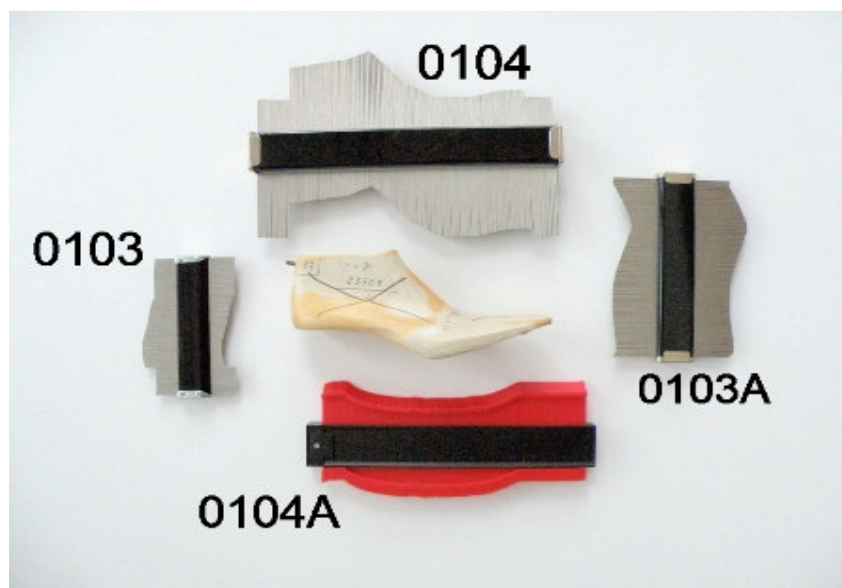
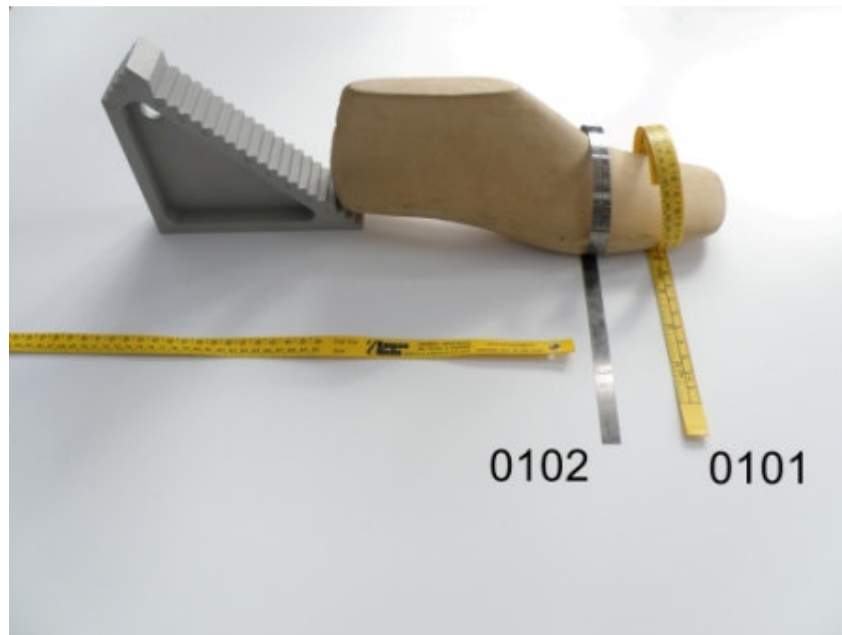
LISTINO UTENSILI PER FORME

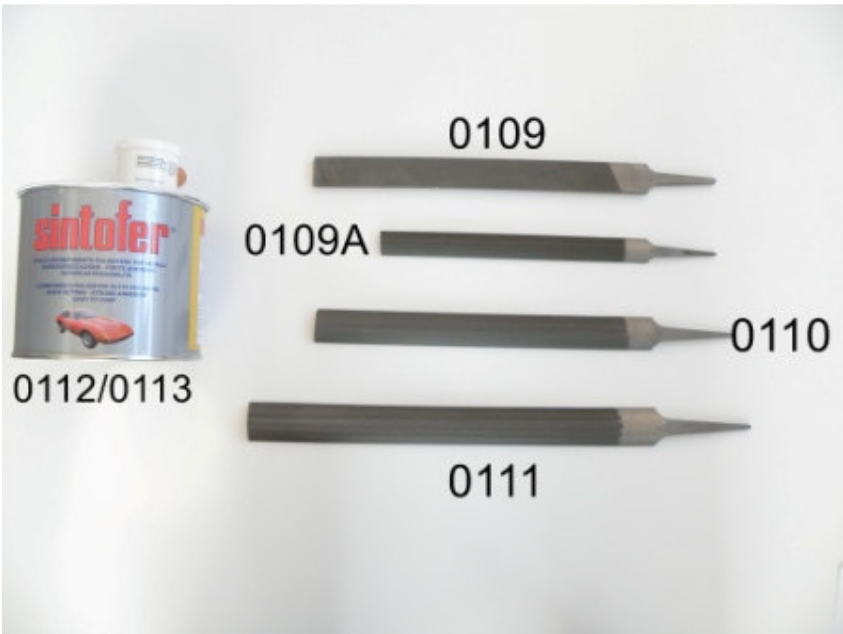
02/2015

TOOLS FOR LAST PRICE LIST

**MODELLERIA
PATTERN MAKERS**

0101	METRINO PLASTICA PLASTIC TAPE MEASURER	€.
0102	METRINO IN METALLO METAL TAPE MEASURER	“
0103	PROFILOMETRO MM. 150X85 PROFIL-GAUGE MM. 150X85	“
0103A	PROFILOMETRO MM. 200X120 PROFIL-GAUGE MM. 200X120	“
0104	PROFILOMETRO MM. 300X150 PROFIL-GAUGE MM. 300X150	“
0104A	PROFILOMETRO PLASTICA MM. 250X105 PLASTIC PROFIL-GAUGE MM. 250X105	“
0105	RASPA NICHOLSON N. 49 NICHOLSON RASP N. 49	“
0105A	RASPA DICK N. 49 DICK RASP N. 49	“
0105B	RASPA CORRADI N. 49 CORRADI RASP N. 49	“
0106	RASPA DICK MM. 250/3 DICK RASP MM. 250/3	“
0107	RASPA DICK MM. 250/4 DICK RASP MM. 250/4	“
0108	RASPA DICK MM. 300/3 DICK RASP MM. 300/3	“
0109	LIMA NICHOLSON PIATTA 10”B NICHOLSON HAND FILE 10”B	“
0109A	LIMA NICHOLSON MEZZA TONDA 8”B NICHOLSON HALF ROUND FILE 8”B	“
0110	LIMA NICHOLSON MEZZA TONDA 10”B NICHOLSON HALF ROUND FILE 10”B	“
0111	LIMA NICHOLSON MEZZA TONDA 12”B NICHOLSON HALF ROUND FILE 12”B	“
0112	STUCCO METALLICO SINTOFER ML. 750 SINTOFER METAL PUTTY ML. 750	“
0113	STUCCO METALLICO SINTOFER VETRIFICATO ML. 750 SINTOFER METAL–GLASS PUTTY ML. 750	“





MARTELLLO RIBATTITTORE PER FERRATURA
PNEUMATIC HAMMER TO PLACE IRON SOLES

0116	MARTELLLO PNEUMATICO ATLAS ATLAS PNEUMATIC HAMMER	€.
0117	MAZZA BATTENTE COMPLETA DI MOLLA RAM COMPLETE OF SPRING	"
0118	MAZZA BATTENTE RAM	"
0119	MOLLA SPRING	"

TORNITURA
TURNING

0121	SERIE 8 COLTELLI WIDIA D.29 F.14 FIN.DONZ. RANGE 8 H.M. CUTTERS D.29 H.14 FIN.DONZ.	€. "
0122	SERIE 8 COLTELLI WIDIA D.43 F.25,4 SGR.DONZ. RANGE 8 H.M. CUTTERS D.43 H.25,4 ROU.DONZ	" "
0123	SERIE 12 COLTELLI WIDIA D.32 F.14 FIN.OMR/NEWLAST RANGE 12 H.M. CUTTERS D.32 H.14 FIN.OMR/NEWLAST	" "
0124	SERIE 12 COLTELLI WIDIA D.36 F.16 SGR.OMR/NEWLAST RANGE 12 H.M. CUTTERS D.36 H.16 ROU.OMR/NEWLAST	" "
0124A	SERIE 8 COLTELLI WIDIA D.28 F.14 FIN SEIDL RANGE 8 H.M. CUTTERS D.28 H.14 FIN SEIDL	" "
0124B	SERIE 8 COLTELLI WIDIA D.38 F.20 SGR SEIDL RANGE 8 H.M. CUTTERS D.38 H.20 ROU SEIDL	" "
0121A	SERIE 4 COLTELLI HSS (X LEGNO) D.29 F.14 RANGE 4 HSS (FOR WOOD) CUTTERS D.29 H.14	" "
0123A	SERIE 6 COLTELLI HSS (X LEGNO) D.32 F.14 RANGE 6 HSS (FOR WOOD) CUTTERS D.32 H.14	" "
0125	MOLA DIAMANTATA D.40X5X3 F.10 GRINDING WHEEL DIAMOND D. 40X5X3 H.10	"
0126	MOLA DIAMANTATA D.30X5X3 F.10 GRINDING WHEEL DIAMOND D. 30X5X3 H.10	"
0127	CINGHIA MM. 1030X12X1 FIN.DONZELLI BELT MM. 1030X12X1 FIN.DONZELLI	"
0128	CINGHIA MM. 1930 H.6 FIN.OMR BELT MM. 1930 H.6 FIN.OMR	"
0129	CINGHIA POLIFLEX SM X 650 O SM X 670 FIN. NEWLAST POLIFLEZ BELT SM X 650 OR SM X 670 FIN. NEWLAST	"

**SEGA A NASTRO
BAND SAW**

0161	ROTOLO M.30,4 LAMA 3/16" (MM.4,8) Z 4 S ROLL M.30,4 BLADE 3/16" (MM.4,8) Z 4 S	€.
0162	ROTOLO M.30,4 LAMA 1/4" (MM.6,4) Z 4 H ROLL M.30,4 BLADE 1/4" (MM.6,4) Z 4 H	"
0163	ROTOLO M.30,4 LAMA 3/8" (MM.9,5) Z 4 H ROLL M.30,4 BLADE 3/8" (MM.9,5) Z 4 H	"
0164	ROTOLO M.76,0 LAMA 1/2" (MM.12,7) Z 3 H ROLL M.76,0 BLADE 1/2" (MM.12,7) Z 3 H	"
0165	ROTOLO LAMA 5/8" (MM.16) - 3/4" (MM.19)-1" (MM.25,4) Z2-3 ROLL BLADE 5/8" (MM.16) -3/4" (MM.19)-1" (MM.25,4) Z2-3	"
0166	SALDATURA ANELLO WELDING BLAD	"

**FRESATRICE SNODO "V" FFA/1 DONZ.
MILLING MACHINE FOR "V" JOINT FFA/1 DONZ.**

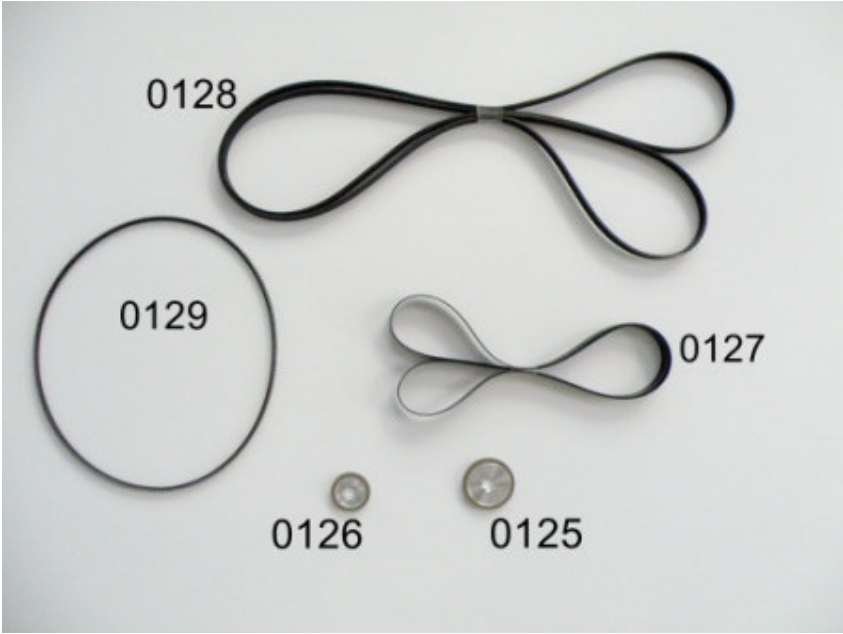
0151	SERIE 10 COLTELLI WIDIA MM.20X8X104 RANGE 10 H.M. CUTTERS MM.20X8X104	€.
------	--	----

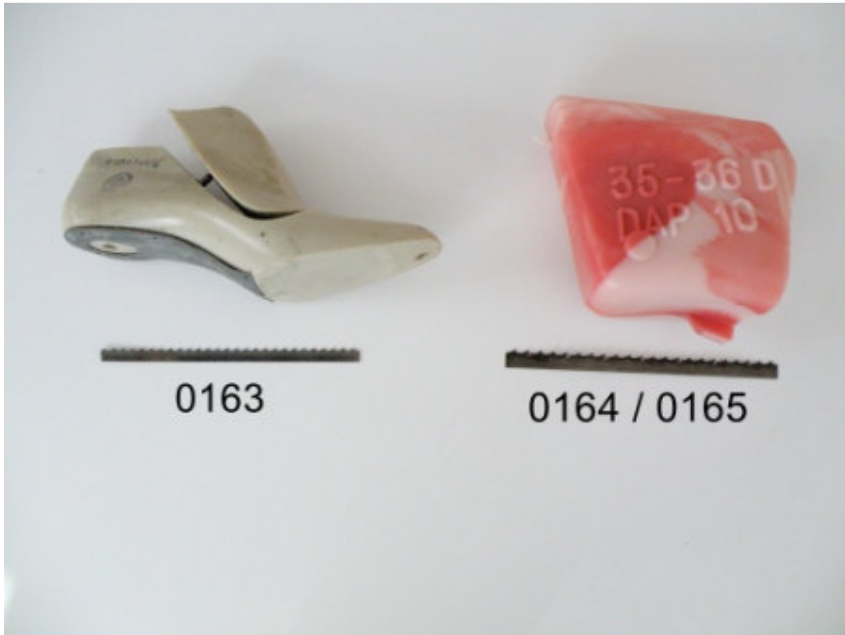
**MACCHINA PER TAGLIO FERRATURA SOTTO ALLO SNODO
MILLING MACHINE TO CUT IRON SOLES UNDER THE JOINT**

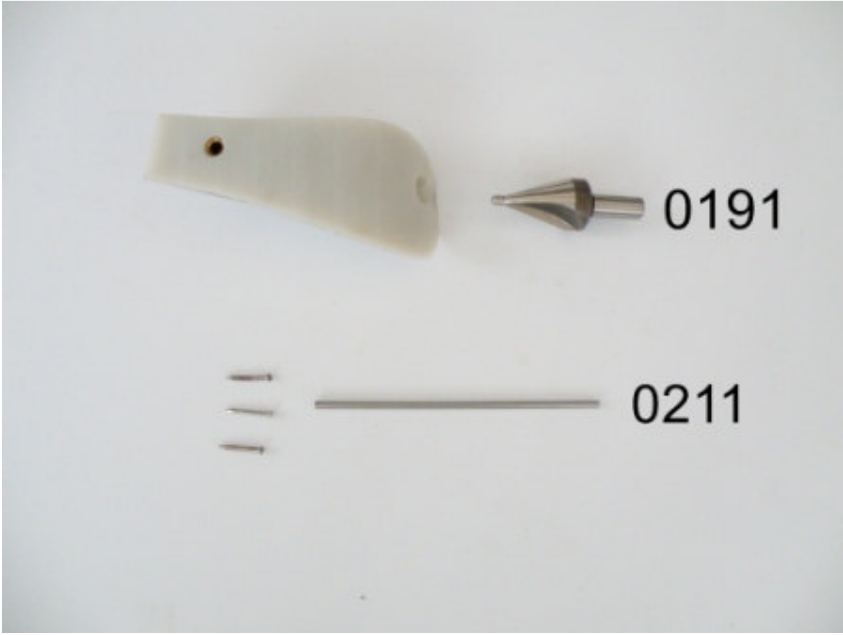
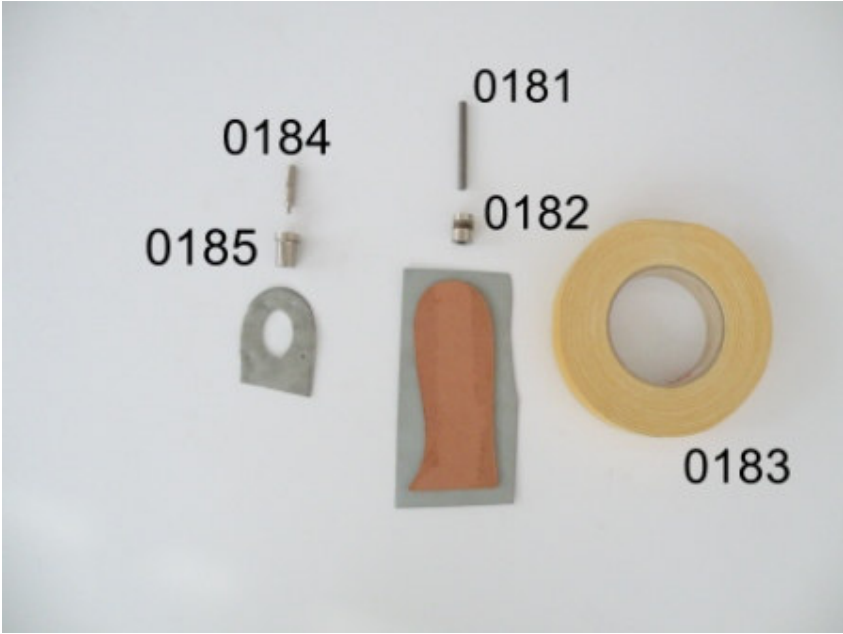
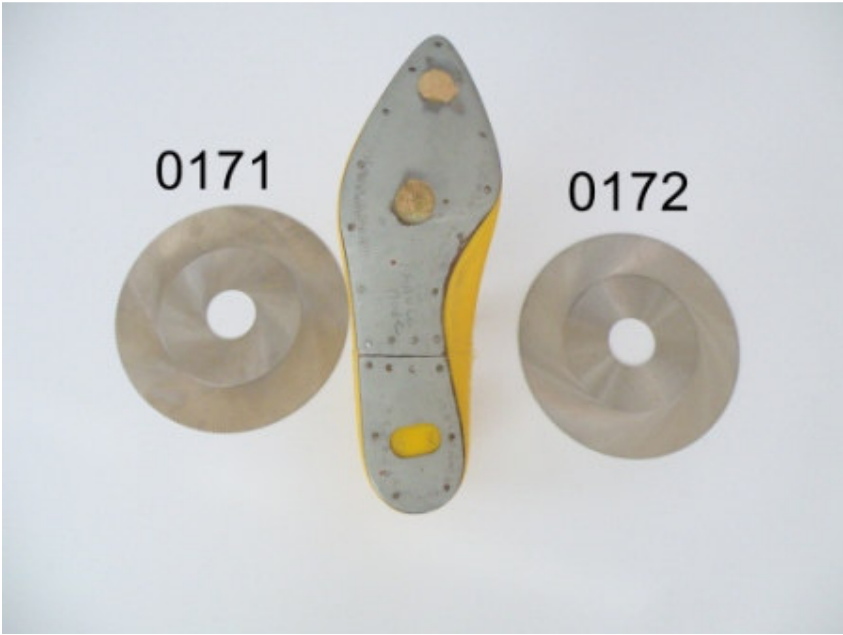
0171	FRESA DISCO HSS D.150 X 1 X 32 Z160/200 HSS DISC MILLER D.150X1X32 Z160/200	€.
0172	FRESA A DISCO HSS D.150X0,6X32 Z 200 HSS DISC MILLER D.150X0,6X32 Z 200	"

**MACCHINA RODITRICE
NIBBLING MACHINE**

0181	PUNZONE WIDIA D.6 X 65 H.M. PUNCH D.6 X 65	€.
0182	MATRICE HSS D.15X19 F.6 HSS MATRIX D.15X19 H.6	"
0183	ROTOLO NASTRO BI-ADESIVO MM.25X25 MT. BI-ADESIVE TAPE ROLL MM.25X25 MT.	"









**TRANCETTA
PUNCHING MACHINE**

0184	PUNZONE WS D.2,5 X CHIODI WS PUNCH D.2,5 FOR NAILS	€.
0185	MATRICE WS D.2,5 X CHIODI WS MATRIX D.2,5 FOR NAILS	"

**TRAPANO ORIZZONTALE
HORIZONTAL DRILLING MACHINE**

0191	SVASA CUNEO HSS HSS WEDGE FLARING	€.
------	--------------------------------------	----

**INCHIOSTRO PER TIMBRATURA
RUBBER STAMP INK**

0202	LT.1 INCHIOSTRO NERO 8041 D LT.1 BLACK INK 8041 D	€.
0203	LT.1 SOLVENTE PER 8041 D LT.1 SOLVENT FOR 8041 D	"
0206	TAMPONE PER INCHIOSTRO IN METALLO CM.10X15 METAL INK – PAD CM.10 X 15	"

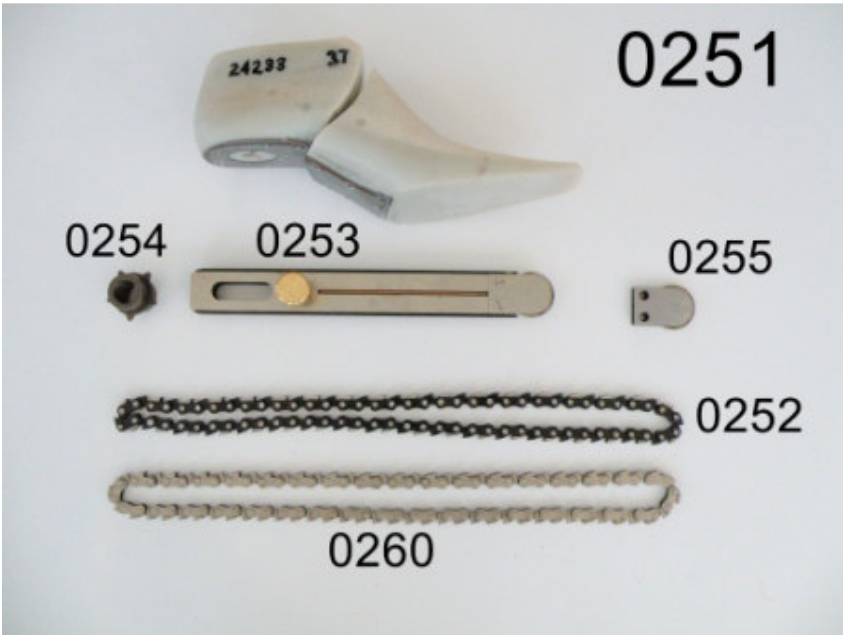
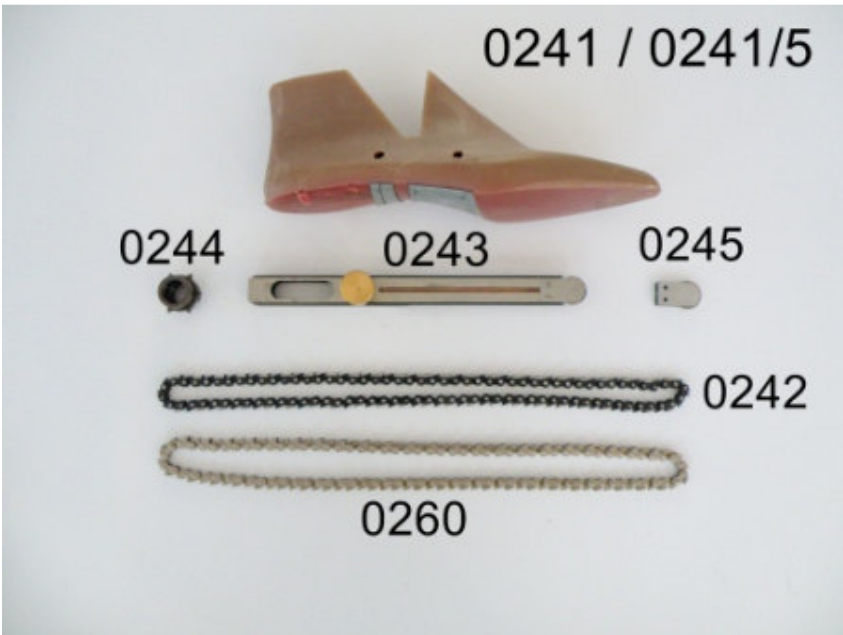
**INCHIODATRICE PNEUMATICA
PNEUMATIC NAILING MACHINE**

0211	MARTELLETTO RICAMBIO D.3,2 X 116 HAMMER D.3,2 X 116	€.
------	--	----

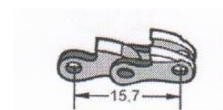
**PUNTE ELICOIDALI
HSS TWIST DRILLS**

0221	PUNTA D.4,5 X 160 X FORATURA PERNO CUNEO TWIST DRILL D.4,5 X 160 FOR WEDGE PIVOT	€.
0222	PUNTA D.6,75 X 225 X FORATURA PERNO SNODO TWIST DRILL D.6,75 X 225 FOR JOINT PIVOT	"
0222A	PUNTA D.6,25 (1/4")X215 X FORATURA PERNO SNODO TWIST DRILL D.6,25 (1/4")X215 FOR JOINT PIVOT	"
0223	PUNTA MONO-ELICA D.6,75X230 FORATURA PERNO SNODO SINGLE-TWIST DRILL D.6,75X230 FOR JOINT PIVOT	"
0224	PUNTA D.7,5X240 X FORATURA MOLLETTA E VERETTA TWIST DRILL D.7,5X240 FOR SPRING AND RING	"
0225	PUNTA D.7,75X240 X FORATURA MOLLETTA E VERETTA TWIST DRILL D.7,75X240 FOR SPRING AND RING	"
0226	PUNTA D.11,75X195 X FORATURA BUSSOLA TWIST DRILL D.11,75X195 FOR LAST TUBE	"
0227	PUNTA D.11,75X195 RIBASSO D.10 FORATURA BUSSOLA TWIST DRILL D.11,75X195 STEP D.10 FOR LAST TUBE	"
0228	PUNTA D.13,75X214 X FORATURA BUSSOLA TWIST DRILL D.13,75X214 FOR LAST TUBE	"
0229	PUNTA D.13,75X214 RIBASSO D.11,5 FORATURA BUSSOLA TWIST DRILL D.13,75X214 STEP D.11,5 FOR LAST TUBE	"
0230	FRESETTA INCASSATURA BUSSOLA D.11,75-13,75 LAST TUBE FLARING MILLER D.11,75 – 13,75	"
0231	PUNTA D.15X220XD.11,75X40 G.RID. D.11,75X48 TWIST DRILL D.15X220XD.11,75X40 RED.S. D.11,75X48	"
0232	D.15X220XD.11,75X39,5XD.10X54 G.RID. D.11,75X48 TWIST DRILL D.15X220XD.11,75X39,5XD.10X54 RED.S. D.11,75X48	"
0233	PUNTA D.15X220XD.11,75X39,5XD.10X70 G.RID. D.11,75X48 TWIST DRILL D.15X220XD.11,75X39,5XD.10X70 RED.S. D.11,75X48	"
0234	PUNTA D.17X222XD.13,75X45 G.RID. D.11,75X48 TWIST DRILL D.17X222XD.13,75X45 RED.S. D.11,75X48	"





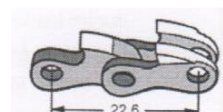
CAVATRICE A CATENA CHAIN SLOTTING MACHINE



Passo "B", 15,7 mm

SNODO A "V" – "V" JOINT

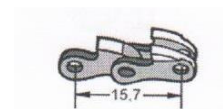
0241	GUARNITURA COMPLETA 6X35 B COMPLETE GEAR 6X35 B	€.
0242	CATENA 6X48 B CHAIN 6X48 B	"
0243	GUIDA 6X35X100 B GUIDE BAR 6X35X100 B	"
0244	PIGNONE 6X35 B PINION 6X35 B	"
0245	RICAMBIO PER GUIDA TN 6X35 B SPARE PART FOR GUIDE TN 6X35 B	



Passo "A", 22,6 mm

SNODO TENDO (LAMPO) - TENDO (LAMPO) JOINT

0251	GUARNITURA COMPLETA 6X50 A COMPLETE GEAR 6X50 A	€.
0252	CATENA 6X36 A CHAIN 6X36 A	"
0253	GUIDA 6X50X150 A GUIDE BAR 6X50X150 A	"
0254	PIGNONE 6X50 A PINION 6X50A	"
0255	RICAMBIO PER GUIDA TN 6X50 A SPARE PART FOR GUIDE TN 6X50 A	"
0260	SUPPLEMENTO CROMATURA (NOVA) EXTRA FOR CHROMIUM-PLATED TREATMENT	"



Passo "B", 15,7 mm

SNODO A "V" – "V" JOINT

0241/5	GUARNITURA COMPLETA 5X35 B COMPLETE GEAR 5X35 B	€.
0242/5	CATENA 5X48 B CHAIN 5X48 B	"
0243/5	GUIDA 5X35X90 B GUIDE BAR 5X35X90 B	"
0244/5	PIGNONE 5X35 B PINION 5X35 B	"
0245/5	RICAMBIO PER GUIDA TN 5X35 B SPARE PART FOR GUIDE TN 5X35 B	"